

# URW540 series

**4,050 kg**  
LIFTING CAPACITY

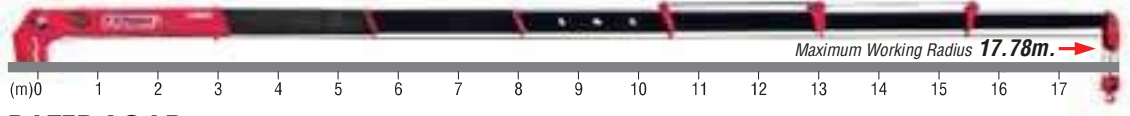
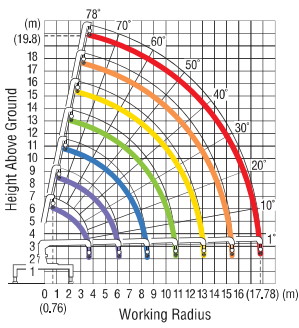
APPROX. **19.8 m**  
MAX. HOOK HEIGHT  
ABOVE GROUND

**RADIO  
REMOTE  
CONTROL**



## SPECIFICATIONS

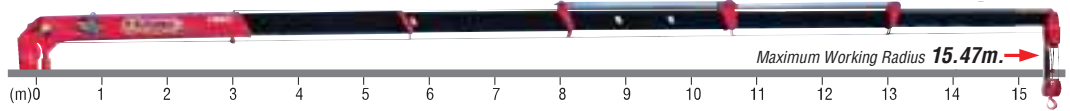
CRANE MODEL		URW543 W/WY	URW544 W/WY	URW545 W/WY	URW546 W/WY	URW547 W/WY
Max lifting capacity		4050kg at 2.9m	4050kg at 2.9m	4050kg at 2.9m	4050kg at 2.9m	4050kg at 2.9m
Max working radius		8.1m	10.6m	13.12m	15.47m	17.78m
Hook height (approx.)	Above ground	10.3m	12.7m	15.1m	17.4m	19.8m
	Below ground	9.4m with 4-part line	12.5m with 4-part line	15.5m with 4-part line	18.4m with 4-part line	21.5m with 4-part line
Boom length		Min 3.51m Max 8.34m	Min 3.57m Max 10.84m	Min 3.75m Max 13.35m	Min 3.93m Max 15.71m	Min 3.99m Max 18.02m
Boom sections		3-section box beam type telescoping boom	4-section box beam type telescoping boom	5-section box beam type telescoping boom	6-section box beam type telescoping boom	7-section box beam type telescoping boom
Boom raise angle		1° to 78°				
Slewing angle		360° continuous				
Winch	Single line pull	9.80kN {1000kgf}				
	Wire rope	Construction: IWRC 6 x WS(26) GRADE B / Diameter x Length: 8mm x 55m / Breaking strength: 47.4kN {4800kgf}	Construction: IWRC 6 x WS(26) GRADE B / Diameter x Length: 8mm x 68m / Breaking strength: 47.4kN {4800kgf}	Construction: IWRC 6 x WS(26) GRADE B / Diameter x Length: 8mm x 81.5m / Breaking strength: 47.4kN {4800kgf}	Construction: IWRC 6 x WS(26) GRADE B / Diameter x Length: 8mm x 91.5m / Breaking strength: 47.4kN {4800kgf}	Construction: IWRC 6 x WS(26) GRADE B / Diameter x Length: 8mm x 103m / Breaking strength: 47.4kN {4800kgf}
Outriggers		Vertical jacks, double acting hydraulic cylinders with pilot-operated check valves / Horizontal beams, manual extension type				
		Retracted: 2.19m, Extended: 4.8m, Mid-extended: 3.3m, 4.3m				
Hydraulic pump	Rated pressure	20.6MPa {210kgf/cm <sup>2</sup> }				
Hydraulic oil tank capacity		60L				
Safety devices		Pressure relief valve for hydraulic circuit / Counterbalance valves for boom raising and boom telescoping cylinders / Pilot-operated check valves for vertical outrigger cylinders / Boom angle indicator with load indicator / Hook safety latch / Automatic mechanical brake for winch / Digital load meter / Automatic stop for overwinding / Overwinding alarm / Alarm buzzer / Level / Emergency stop button / Overloading alarm				



**RATED LOAD**

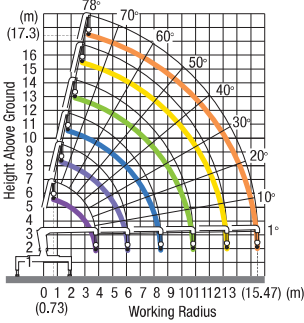
Working Radius	2.9	3.5	4.0	4.5	5.0	5.5	6.0	7.0	8.0	9.0	10.0	11.0	12.0	13.0	14.0	15.0	16.0	17.78
	4050	3350	3100 (3.75m)															
	4050	3350	3050	2450	2150	1900	1650 (6.15m)											
	3050	3050	3050	2450	2150	1900	1650	1350	1050 (8.5m)									
	2050	2050	2050	2050	1850	1700	1500	1250	1050	900	800	750 (10.82m)						
	1350	1350	1350	1350	1250	1150	1000	850	750	700	650	600	550 (13.14m)					
		550	550	550	550	550	550	450	420	400	370	350	320	300	270	250 (15.46m)		
			350	350	350	350	350	300	280	250	220	210	200	190	180	170	160	150

**6 Sections Boom**



**RATED LOAD**

Working Radius	0.73 ~ 2.9	3.5	4.0	4.5	5.0	5.5	6.0	7.0	8.0	9.0	10.0	11.0	12.0	13.0	14.0	15.47
	4.05	3.35	3.20 (3.69m)													
	4.05	3.35	3.05 (3.9m)	2.45	2.15	1.90	1.65 (6.09m)									
	3.05	3.05	3.05 (3.9m)	2.45	2.15	1.90	1.65	1.35	1.05 (8.48m)							
			2.05	2.05	1.85	1.70	1.50	1.25	1.05	0.90	0.80	0.75 (10.81m)				
				1.35	1.35	1.25	1.15	1.00	0.85	0.75	0.70	0.65	0.60	0.55 (13.14m)		
							0.55	0.45	0.40	0.40	0.35	0.35	0.30	0.30	0.30	0.25

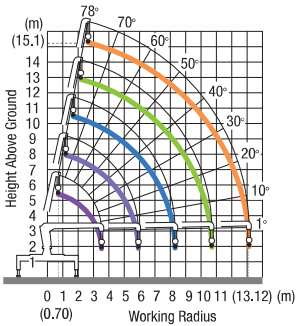


**5 Sections Boom**

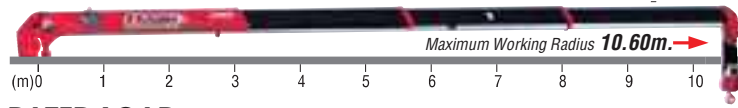


**RATED LOAD**

Working Radius	0.70 ~ 2.9	3.5	4.0	4.5	5.0	5.5	6.0	7.0	8.0	9.0	10.0	11.0	12.0	13.12
	4.05	3.35 (3.51m)												
	4.05	3.35	3.05 (3.9m)	2.45	2.15	1.90	1.70 (5.91m)							
	3.05	3.05	3.05 (3.9m)	2.45	2.15	1.90	1.70	1.35	1.10 (8.31m)					
			2.05	2.05	1.85	1.70	1.50	1.25	1.05	0.90	0.80	0.75 (10.71m)		
				1.35	1.35	1.25	1.15	1.00	0.85	0.75	0.70	0.65	0.60	0.55

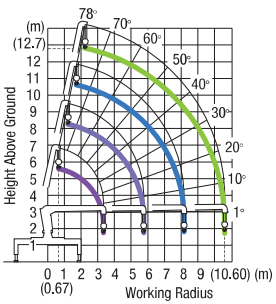


**4 Sections Boom**

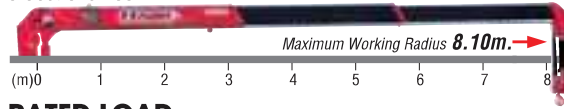


**RATED LOAD**

Working Radius	0.67 ~ 2.9	3.5	4.1	4.5	5.0	5.5	6.0	7.0	8.0	9.0	10.0	10.6
	4.05	3.50 (3.33m)										
	4.05	3.35	3.05	2.60	2.30	1.95	1.8 (5.76m)					
	3.05	3.05	3.05	2.60	2.30	1.95	1.75	1.45	1.15 (8.18m)			
		2.05	2.05	2.05	1.85	1.70	1.50	1.25	1.10	1.00	0.90	0.85

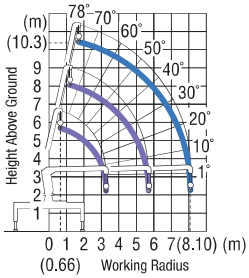


**3 Sections Boom**



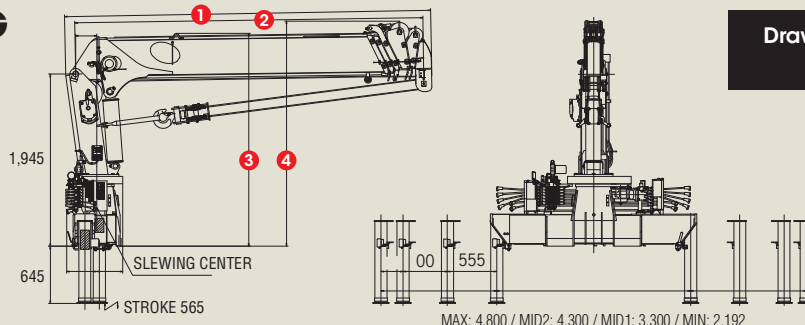
**RATED LOAD**

Working Radius	2.9	3.5	4.1	4.5	5.0	5.5	6.0	6.5	7.0	7.5	8.1
	4050	3500 (3.24m)									
	4050	3350	3050	2600	2300	2000	1900 (5.7m)				
		3050	3050	2600	2300	2000	1750	1600	1450	1350	1250



CRANE MODEL	1	2	3	4
UR-W546W/WY	4,134	Min. 3,930 ~ Mid. 6,330 ~ 8,720 ~ 11,050 ~ 13,380 ~ Max. 15,710	2,405	2,545
UR-W545W/WY	3,959	Min. 3,750 ~ Mid. 6,150 ~ 8,550 ~ 10,950 ~ Max. 13,350	2,366	2,370
UR-W544W/WY	3,779	Min. 3,570 ~ Mid. 6,000 ~ 8,420 ~ Max. 10,840	2,319	2,326

**CRANE MOUNTING DIMENSIONS**



Drawing: UR-W546W/WY (Unit: mm)

MAX: 4,800 / MID2: 4,300 / MID1: 3,300 / MIN: 2,192