

UR-W706C

UNIC MINI-CRAWLER CRANE

UR-W706C features maximum hook height of 19.5m with its six section hydraulic boom.

With a 6.05t lifting capacity at 3.0m and maximum hook height of 19.5m, it is compact enough to travel through a standard size double doorway. Its compactness and flexibility allow it to travel where no other cranes could have gone before.

Max 19.5m
Hook height (Approx.)
(Above ground level)

Max 6.05t x 3.0m
Lifting capacity

Max 18.60m
Working radius

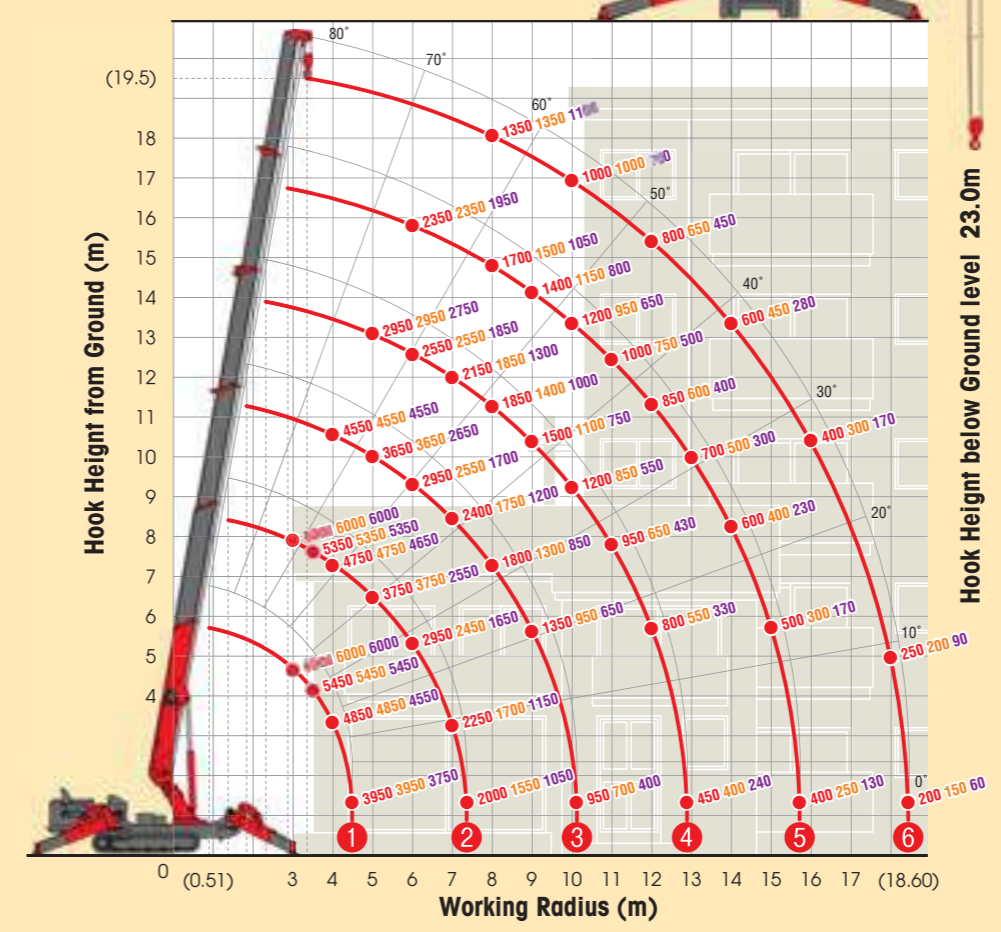
7980kg
Mass of crane

Radio remote control



WORKING RANGE & NET RATED LOADS (kg)

Outrigger ● Max-extended Mid-extended Min-extended



Hook Height below Ground level 23.0m

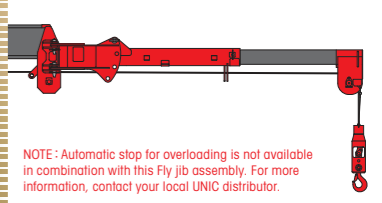
Automatic stop for overloading (ML-300)



Three colored lamp



Fly jib assembly (Options)



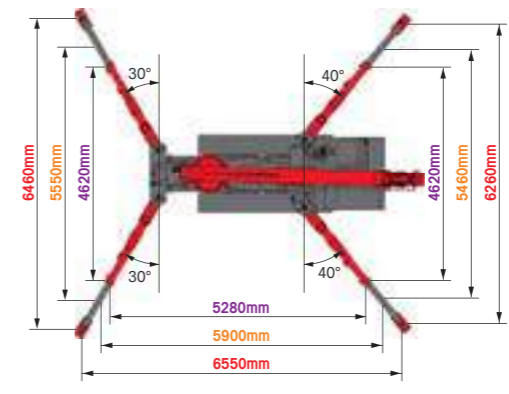
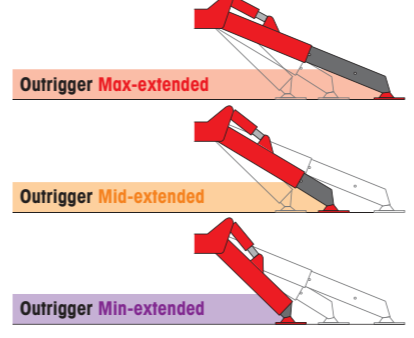
NOTE: Automatic stop for overloading is not available in combination with this Fly jib assembly. For more information, contact your local UNIC distributor.

Length	at 2.11m or of 3.11m
Lifting capacity	Max. 800kg
Tilt angles	0°, 20°, 40°, 60°

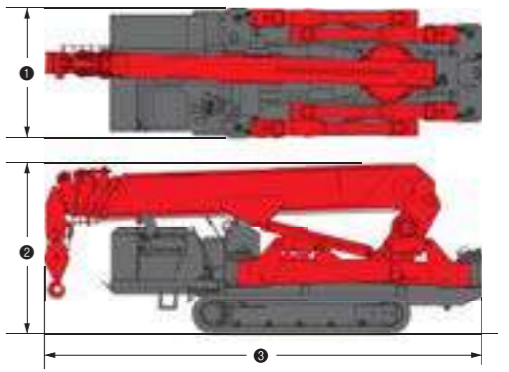
SPECIFICATIONS

Crane model	UR-W706C2	
Lifting capacity	Max. 6.05t at 3.0m	
Working radius	Min. 0.51m, Max. 18.60m	
Hook height (Approx.)	Above ground level	
	Max. 19.5m	
Length	Below ground level	
	Max. 23.0m with 4-part line	
Boom	Min. 4.80m to Max. 19.20m	
	Extending speed	14.40m / 52.0 sec.
	[with electric power unit]	[50Hz] 14.40m / 110.0 sec. [60Hz] 14.40m / 90.0 sec.
	Raising angle / speed	0° to 80° / 16.0 sec.
Winch	[with electric power unit]	[50Hz] 0° to 80° / 45.0 sec. [60Hz] 0° to 80° / 37.0 sec.
	Structure	6-section box beam type telescoping boom
Slewing	Single line speed	44.0 m/min (at 4th layer)
	[with electric power unit]	[50Hz] 15.6 m/min (at 4th layer) [60Hz] 17.7 m/min (at 4th layer)
	Hook speed	11.0 m/min at 4th layer with 4-part line
	[with electric power unit]	[50Hz] 3.9 m/min (at 4th layer with 4-part line) [60Hz] 4.4 m/min (at 4th layer with 4-part line)
Outriggers	Structure	Hydraulic motor driven, planetary gear reduction, with automatic mechanical brake and counterbalance valve and wire rope retaining roller
	Wire rope	Construction : IWRC 6 XP F(29) / Diameter x Length : 10mm x 111.0m / Breaking strength : 92.2kN [9400 kgf]
	Hook block	6.00t capacity, 2 sheaves with safety latch
Hydraulic pump	Range	360° continuous rotation on a ball bearing race
	Speed [with electric power unit]	2.5 rpm [50Hz] 1.8 rpm [60Hz] 1.8 rpm
Safety devices	Structure	Hydraulic motor driven, worm gear reduction, spur gear reduction, and worm self-locking brake (supported by ball bearings)
	Outriggers	Horizontal, Vertical
Hydraulic pump	Type	A double acting hydraulic cylinder, direct pushing type (Directly connected with hydraulic automatic lock device)
	Rated pressure	Variable delivery piston pump
Hydraulic oil tank capacity	Rated pressure	24.5 MPa [250 kgf/cm ²]
	Rated delivery	81 liters/min
Safety devices	Rated revolution	2500 rpm
	Hydraulic oil tank capacity	120 liters
Pressure relief valve for hydraulic circuit / Counterbalance valves for boom raising and boom telescoping cylinders / Pilot-operated check valves for outrigger cylinders (Horizontal) / Double pilot-operated check valves for outrigger cylinders (Vertical) / Boom angle indicator with load indicator / Hook safety latch / Automatic mechanical brake for winch / Automatic stop for overwinding / Overwinding alarm / Automatic stop for leaving minimum wire rope / Emergency stop button / Inter-lock device of crane and crawling levers / Inter-lock device of crane and outriggers / Level / Automatic stop for overloading (ML-300) / Digital load meter / Three colored lamp / Headlight / Boom outrigger monitor lamp		

OUTRIGGER POSITIONS



DIMENSIONS



Crane model	UR-W706C2
1 Total width	1670mm
2 Total height	2185mm
3 Total Length	5610mm
Mass of crane	7920kg [8080kg]

Electric power unit specifications

Rated power	7.5kW (3-phase 4 poles)
Voltage	AC 200V or 400V (50Hz / 60Hz) 3 phase 4P

*Not included any cables.

CRAWLING GEAR

Crane model	UR-W706C2
Crawling speed	0-2.9 km/h, forward / backward
[with electric power unit]	[50Hz] 0-1.0 km/h [60Hz] 0-1.2 km/h
Hill climbing ability	23°
Tread length	2275mm
Ground contact pressure	43.2 kPa [0.44 kgf/cm ²]
[with electric power unit]	44.1 kPa [0.45 kgf/cm ²]
Engine manufacturer / model	Mitsubishi / S4L2
Displacement	1758cc
Maximum output	23.00kW(31.3PS) / 2500 rpm, Rated output
Fuel	Diesel
Fuel tank capacity	74 liters
Steering	Hydraulic drive independent of left / right
Starter	Starter motor