

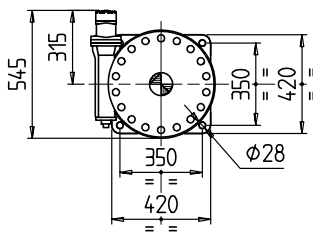
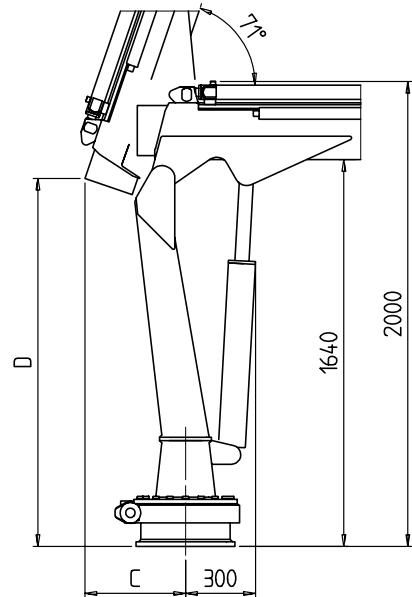
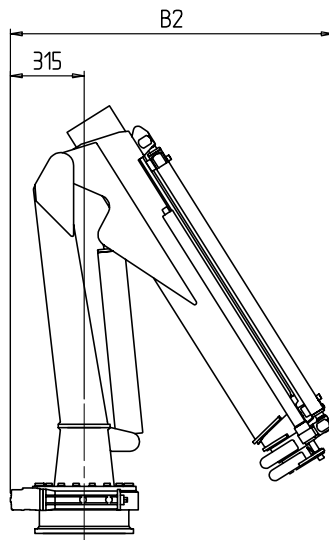
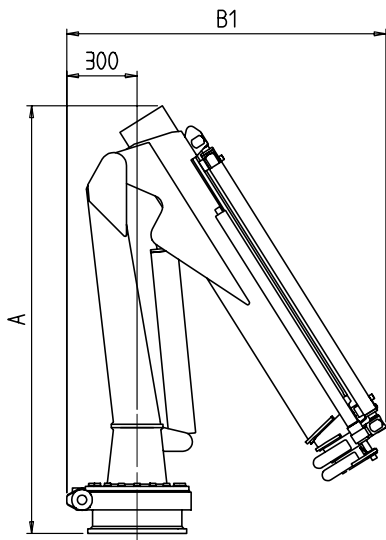


SCHEDA TECNICA TECHNICAL SHEET

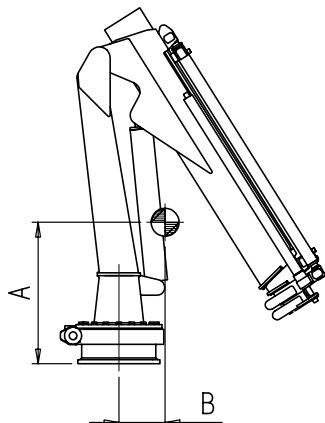
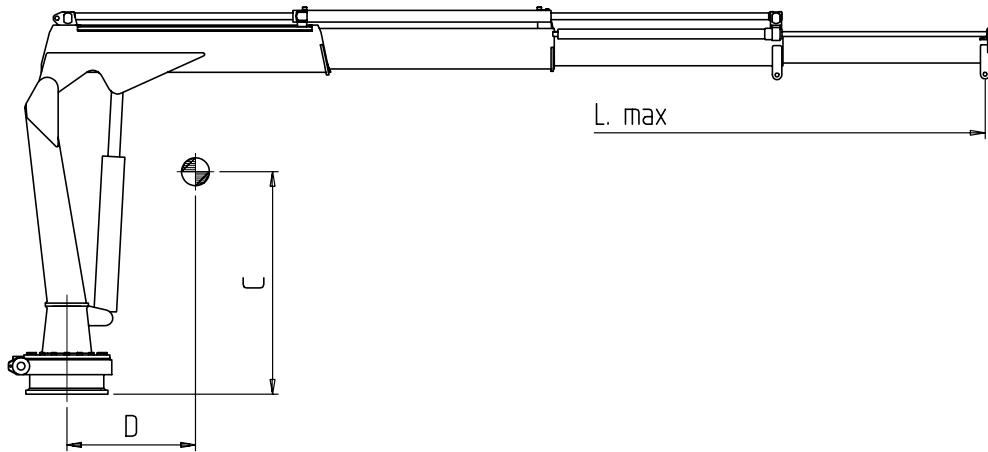


Cod.: MP.0.171 I-GB
Rev.: 0

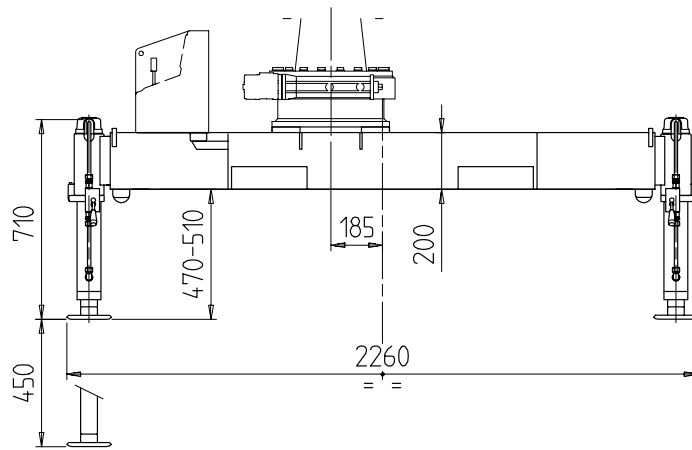




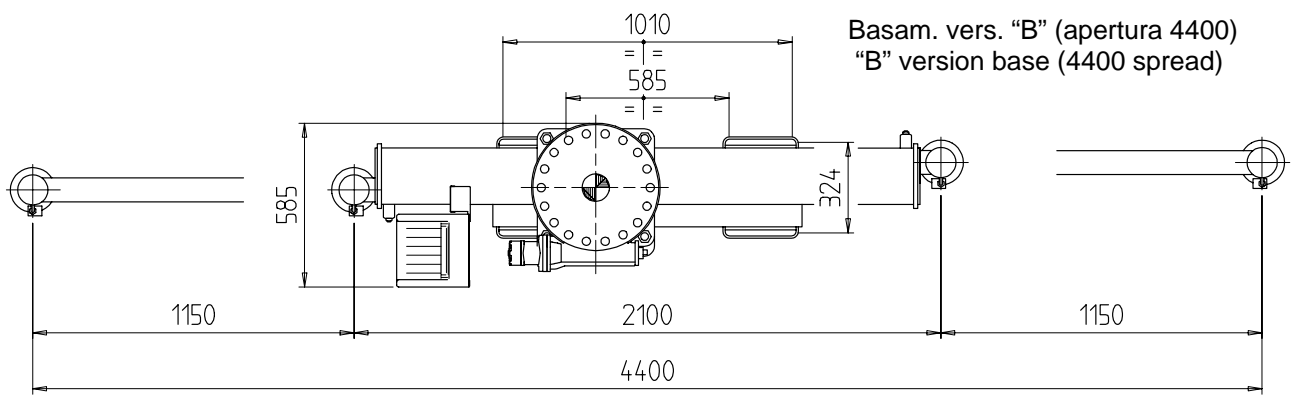
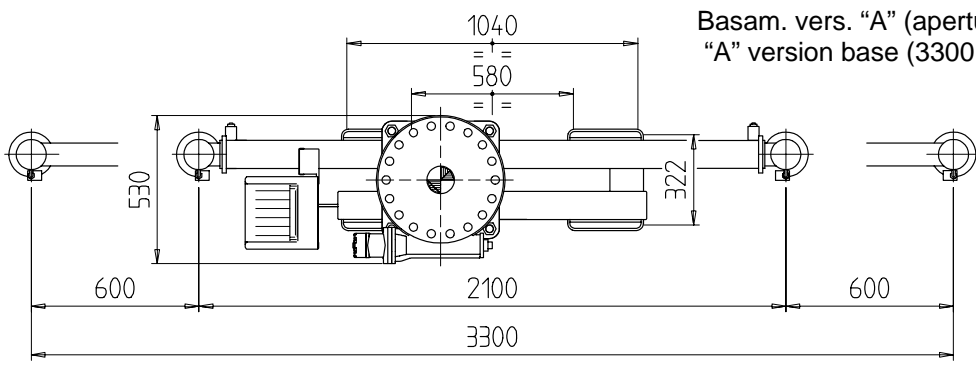
| DIMENSIONI - DIMENSIONS | | | | | |
|-------------------------|------|------|------|-----|------|
| GRU - CRANE | A | B1 | B2 | C | D |
| ML 510.2 | 1830 | 1380 | 1395 | 445 | 1565 |
| ML 510.3 | 1830 | 1380 | 1395 | 445 | 1565 |
| ML 510L.2 | 1790 | 1510 | 1525 | 445 | 1610 |
| ML 510L.3 | 1790 | 1510 | 1525 | 445 | 1610 |
| ML 510L.4 | 1790 | 1510 | 1525 | 445 | 1610 |



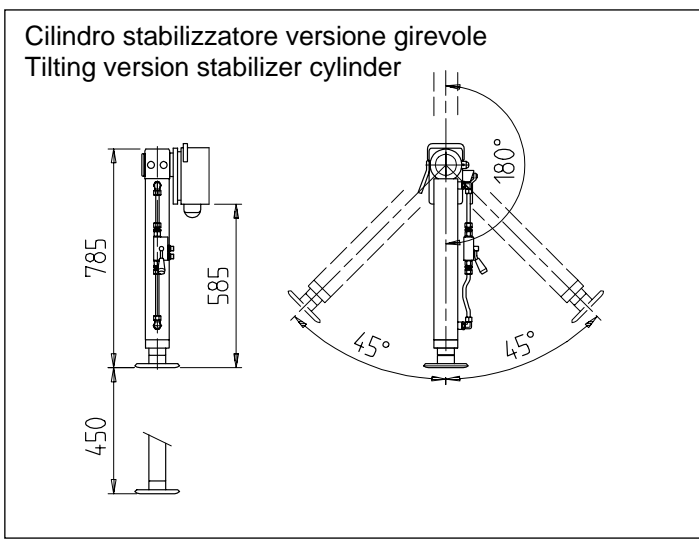
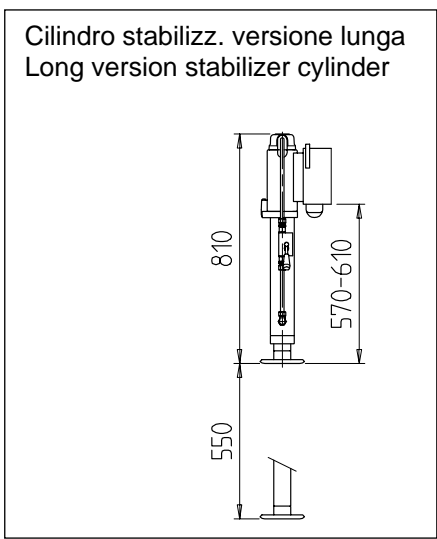
| GRU - CRANE | A | B | C | D | L max |
|------------------|-----|-----|------|------|-------|
| ML 510.2 | 670 | 170 | 940 | 550 | 3640 |
| ML 510.3 | 690 | 200 | 1000 | 800 | 4700 |
| ML 510L.2 | 600 | 220 | 980 | 740 | 4390 |
| ML 510L.3 | 620 | 260 | 1050 | 1090 | 5750 |
| ML 510L.4 | 610 | 290 | 1090 | 1360 | 6830 |



Basam. vers. "A" (apertura 3300)
"A" version base (3300 spread)



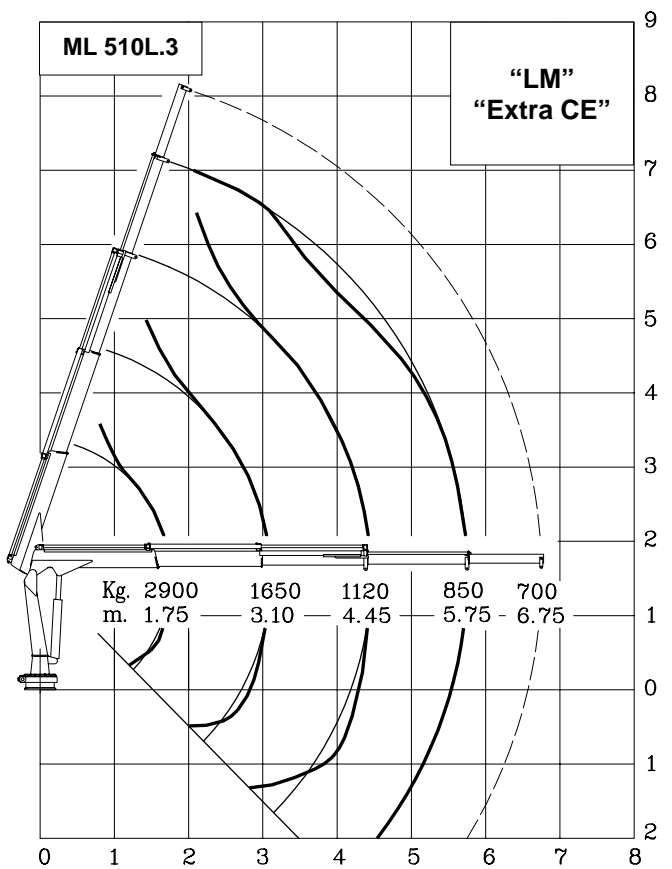
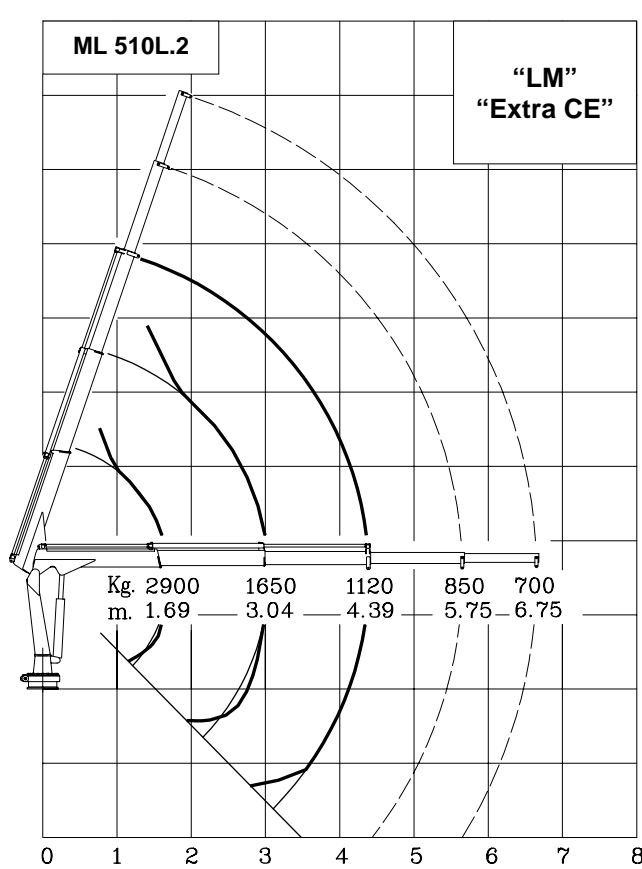
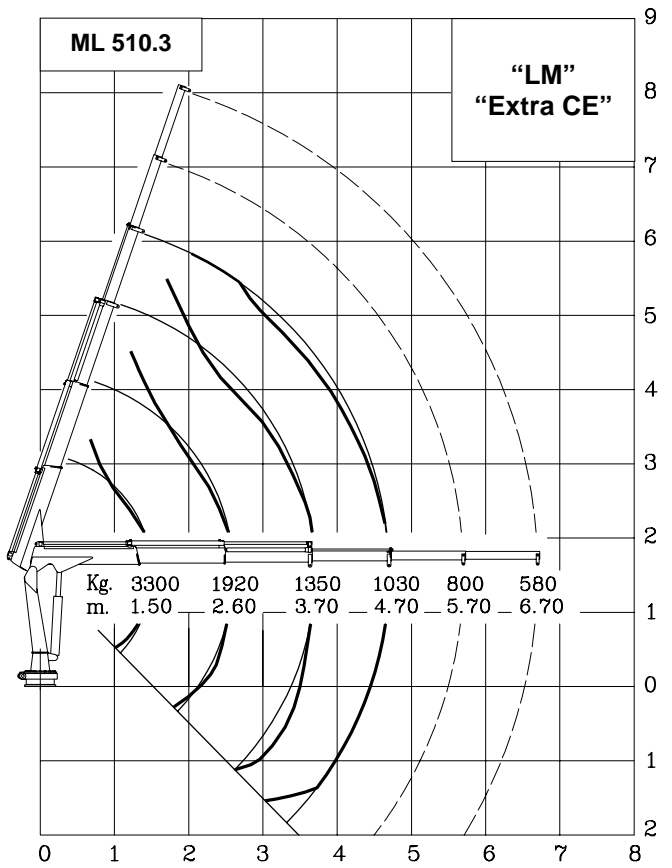
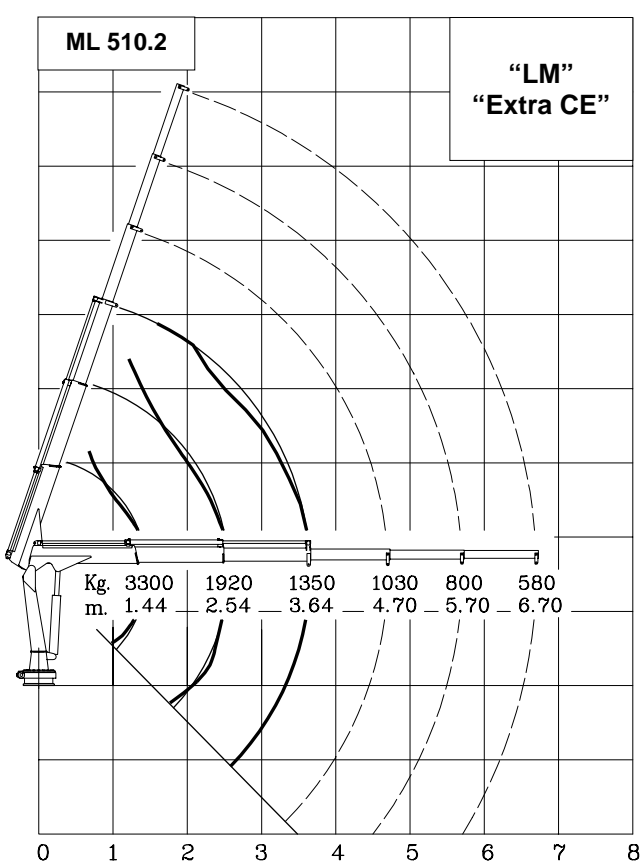
Basam. vers. "B" (apertura 4400)
"B" version base (4400 spread)



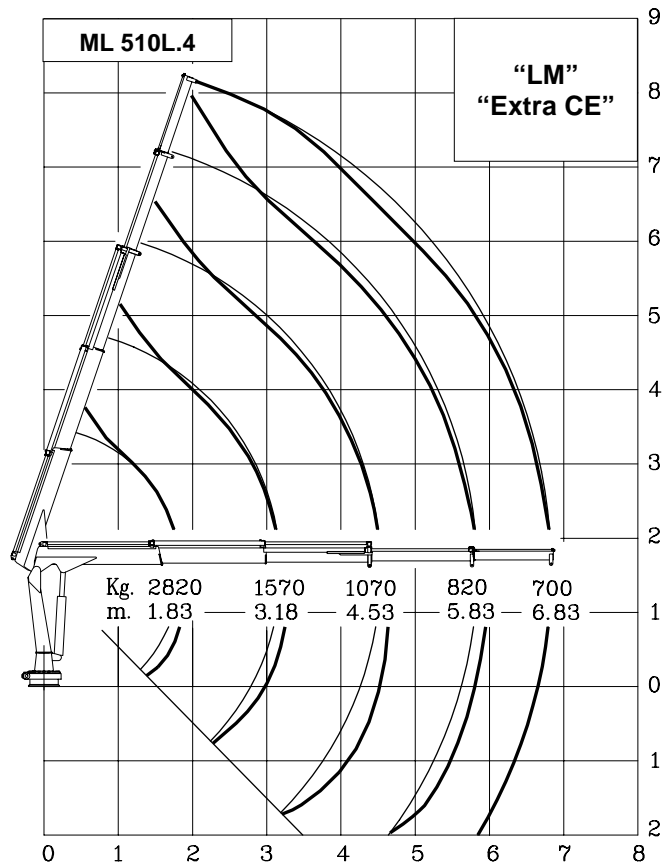
| DATI TECNICI - TECHNICAL DATA | U.M. | VERSIONE - VERSION | | | | |
|---|-------|--------------------|----------|-----------|-----------|-----------|
| | | ML 510.2 | ML 510.3 | ML 510L.2 | ML 510L.3 | ML 510L.4 |
| CAPACITA' DI SOLLEVAMENTO CRANE RATING | kNm | 48 | | | | |
| N° SFILATE STANDARD (IDRAULICHE) STANDARD EXTENSIONS Nr. (HYDRAULICS) | N° | 2 | 3 | 2 | 3 | 4 |
| SBRACCIO STANDARD STANDARD OUTREACH | m | 3.64 | 4.70 | 4.39 | 5.75 | 6.83 |
| ANGOLO DI ROTAZIONE SLEWING ANGLE | ° | 330° | | | | |
| INCLINAZIONE MASSIMA MAXIMUM ANGLE SLOPE | ° | 5° | | | | |
| COPPIA DI ROTAZIONE SLEWING TORQUE | kNm | 8 | | | | |
| ALTEZZA SOLLEVAMENTO MAX. DALLA BASE MAX. LIFTING HEIGHT FROM CRANE BASE | m | 5.00 | 6.00 | 5.70 | 7.00 | 8.00 |
| PORTATA CONSIGLIATA SUGGESTED OIL FLOW | l/min | 15÷18 | | | | |
| PRESSIONE MAX. DI ESERCIZIO MAX. WORKING PRESSURE | bar | 230 | | | | |
| PESO GRU BASE BASIC CRANE WEIGHT | kg | 465 | 500 | 485 | 530 | 565 |
| PESO BASAM. CON STABILIZZ. ESTENDIBILI, VERS. "A" BASE WEIGHT WITH EXT. STABILIZERS, "A" VERS. | kg | 240÷270 | | | | |
| PESO BASAM. CON STABILIZZ. ESTENDIBILI, VERS. "B" BASE WEIGHT WITH EXT. STABILIZERS, "B" VERS. | kg | 305÷345 | | | | |

| SPECIFICHE ARGANO - WINCH SPECIFICATIONS | U.M. | |
|--|-------|----------------------------------|
| ARGANO TIRO DIRETTO MAX. (3°STRATO) MAX. WINCH SINGLE LINE CAPACITY (3 rd LAYER) | kg | 990 ("CE") 1000 (EXTRA "CE") |
| VELOCITA' SALITA FUNE (3°STRATO) ROPE RAISING SPEED (3 rd LAYER) | m/min | 15 |
| VELOCITA' DISCESA FUNE (3°STRATO) ROPE LOWERING SPEED (3 rd LAYER) | m/min | 20 |
| DIAMETRO FUNE ROPE DIAMETER | mm | 8 |
| LUNGHEZZA FUNE ROPE LENGTH | m | 30 |
| PESO KIT ARGANO WINCH KIT WEIGHT | kg | 75 |

| TEMPI DI FUNZIONAMENTO | | | OPERATING TIMES | | | | | | | | | |
|--------------------------|-----------------------------|----------------------------|----------------------------------|-------|--------|--------|--------|----------------------------------|-------|--------|--------|--------|
| ROTAZ. SLEW. (rpm) | SOLLEV. LIFTING (sec) | DISCESA LOWER. (sec) | USCITA EXTENSION OUT (sec) | | | | | RIENTRO EXTENSION IN (sec) | | | | |
| | | | 510.2 | 510.3 | 510L.2 | 510L.3 | 510L.4 | 510.2 | 510.3 | 510L.2 | 510L.3 | 510L.4 |
| | | | 2.3 | 21 | 13 | 17 | 22 | 20 | 31 | 36 | 10 | 12 |



Nella versione “LM”, le prolunghe meccaniche non sono controllate dal limitatore
 In the “LM” version, the mechanical extensions are not controlled by the load limiter



Classe sollev. **HC1 – HD4/B3**
 Lifting class



by Next Hydraulics Via Mediterraneo n°6, 42022 Boretto (R.E.) Italy

Tel.: +39.0522.963008, Fax.: +39.0522.963039 <http://www.maxiliftcrane.com> E-mail: info@maxiliftcrane.com