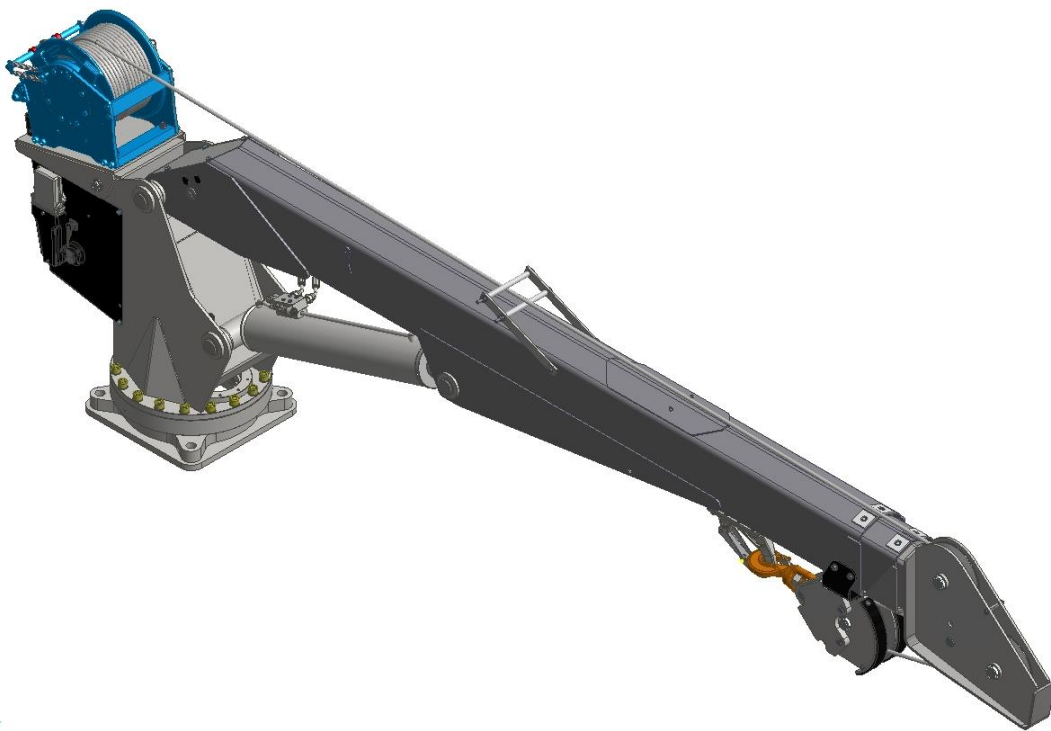


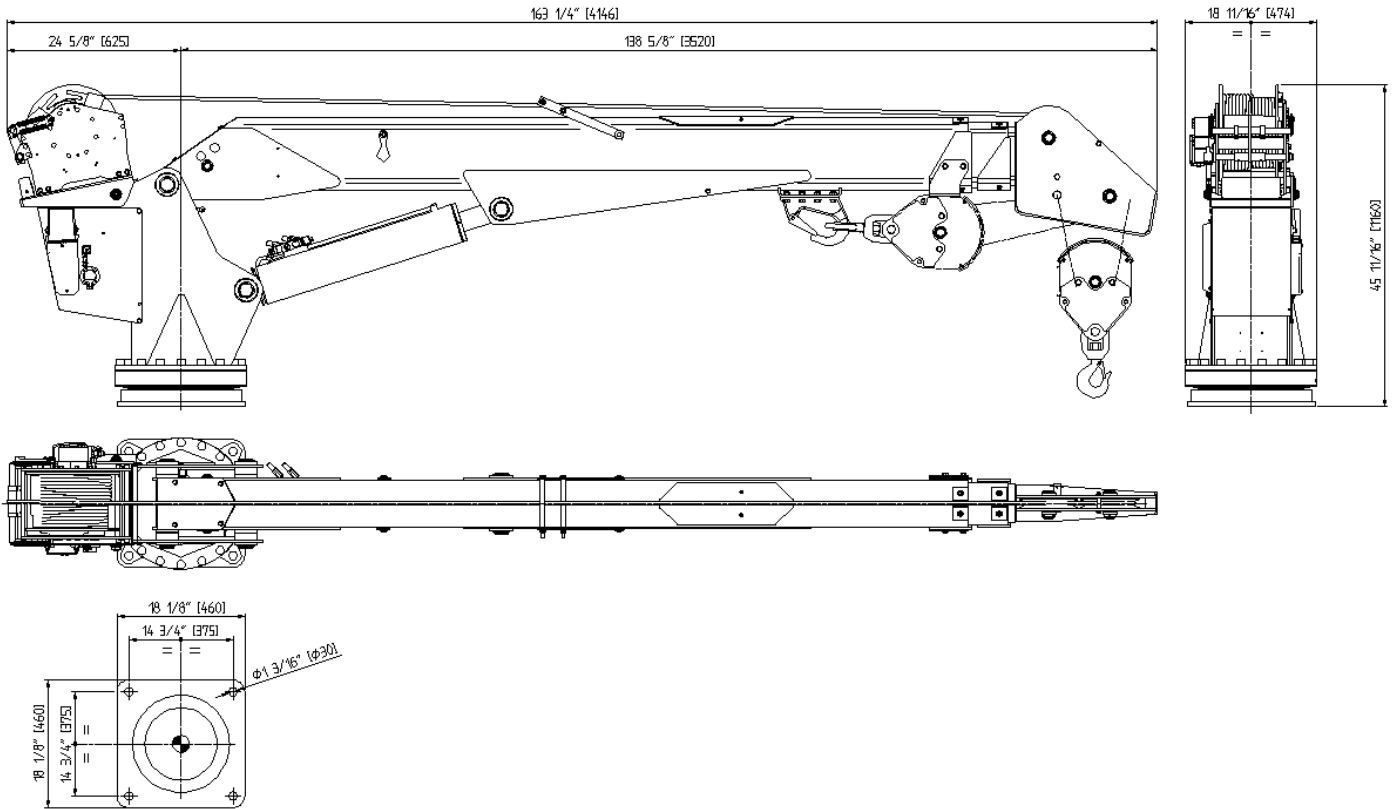
COBRA

11000.2 - 11000.3

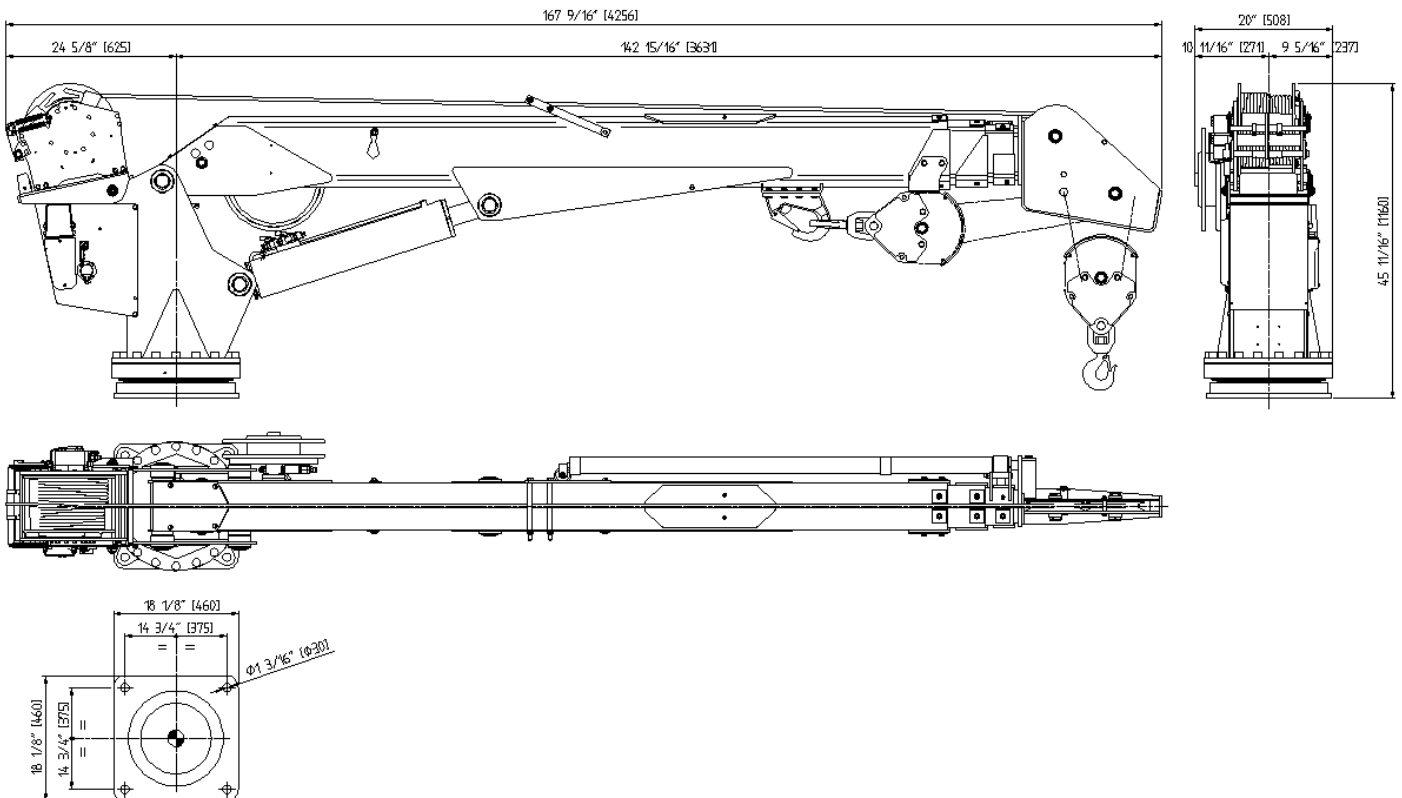


TECHNICAL SHEET

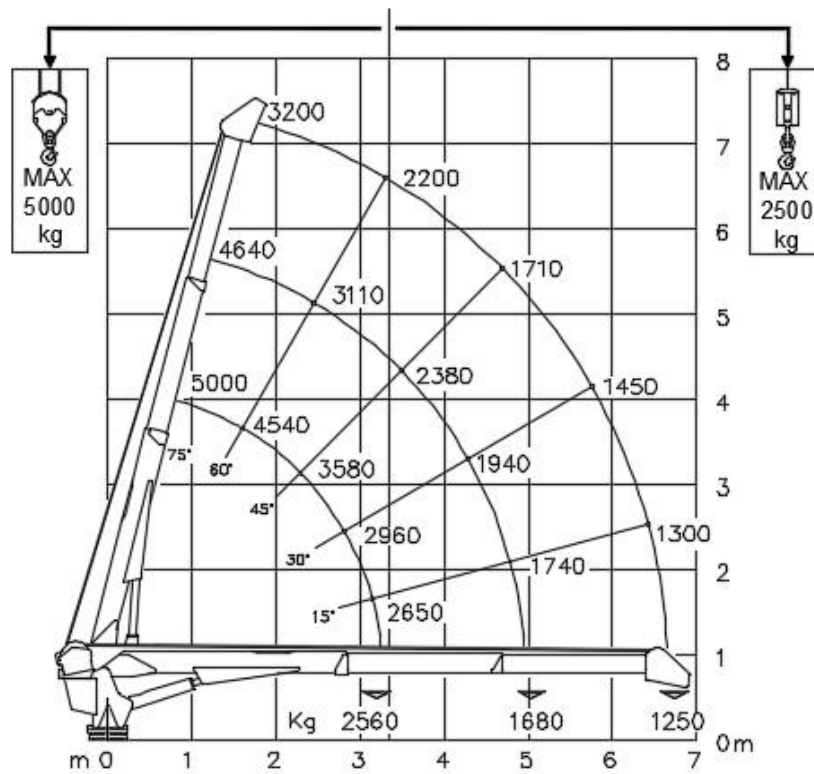
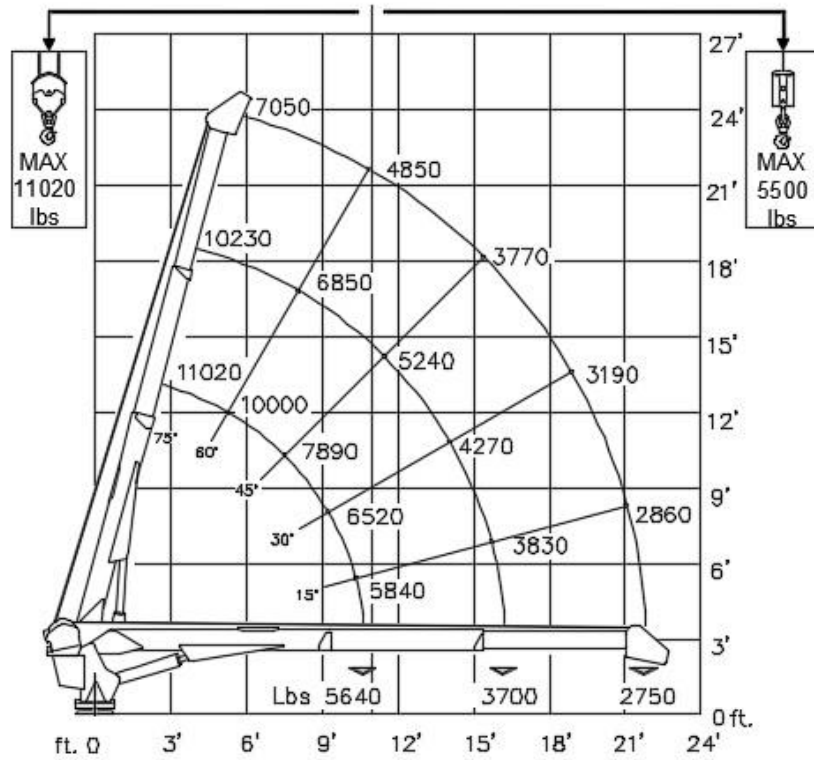
Overall dimensions 11000.2



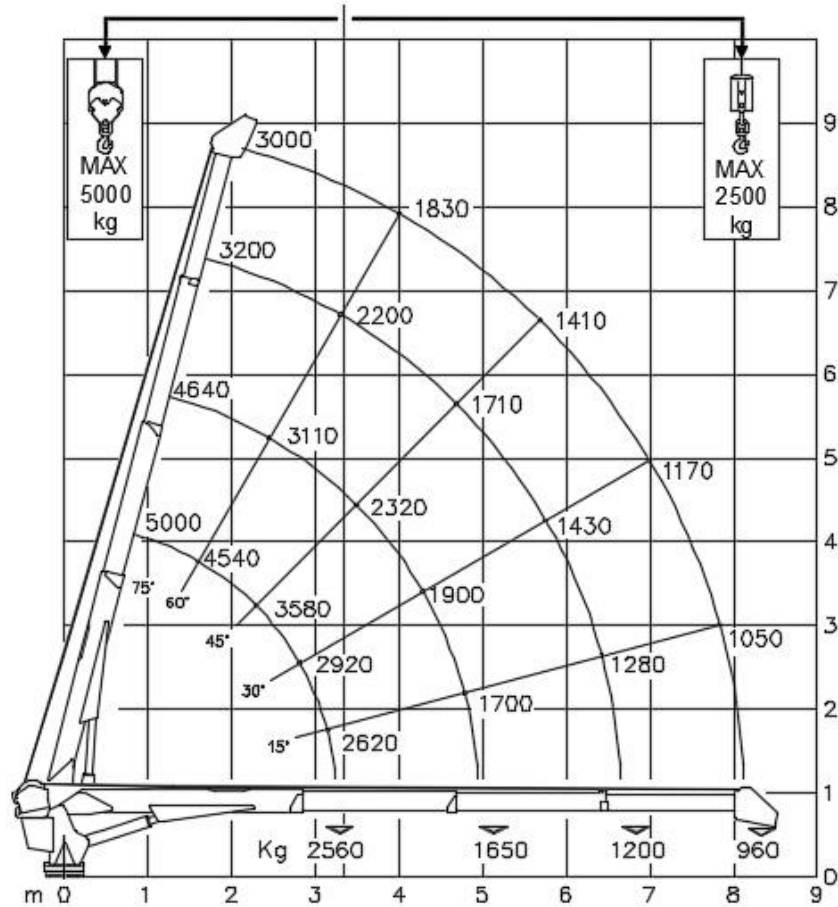
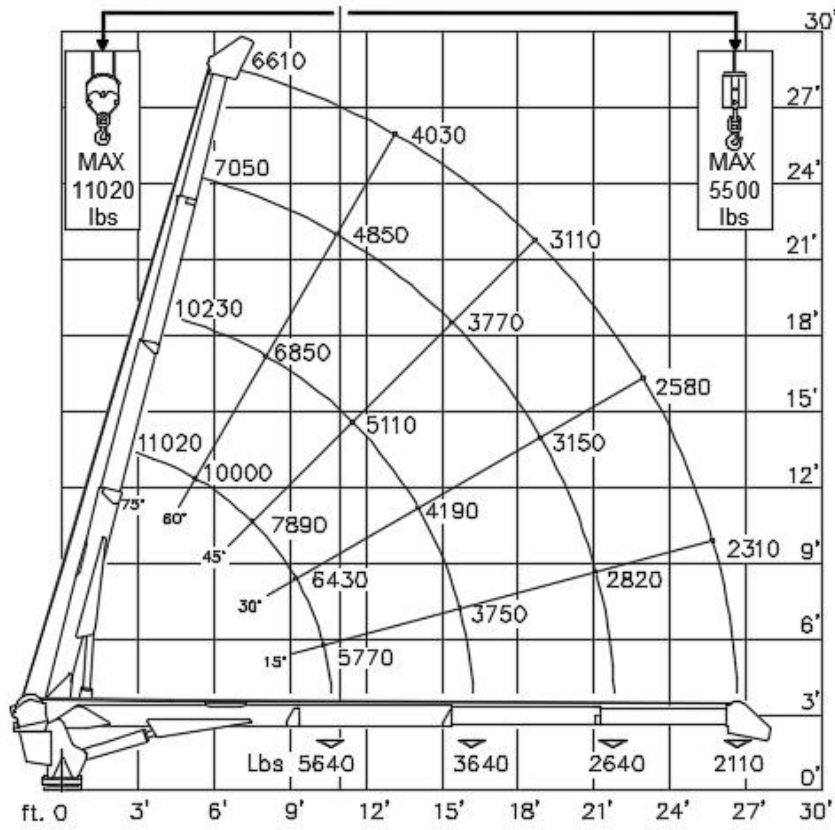
Overall dimensions 11000.3




Load chart 11000.2



Load chart 11000.3



 Next Hydraulics Boretto R.E.		CARATTERISTICHE TECNICHE TECHNICAL DATA	
CARATTERISTICHE TECNICHE TECHNICAL DATA	MODEL	11000	
	VERSION	11000.2	11000.3
MOMENTO DI SOLLEVAMENTO CRANE RATING	Tm kNm ft.lbs	8.5 83.2 61400	
NUMERO E TIPO SFILATE EXTENSIONS TYPE	N°	2 HYDRAULIC	3 HYDRAULIC
SFILAMENTO IDRAULICO HYDRAULIC EXTENSION	m ft	3.40 11	4.90 16
SBRACCIO IDRAULICO HORIZONTAL REACH (from center line of rotation)	m ft	6.83 22' 5"	8.44 27' 8"
ANGOLO DI ROTAZIONE SLEWUNG ANGLE	°	CONTINUO CONTINUOUS	
COPPIA DI ROTAZIONE SLEWING TORQUE	kNm ft.lbs	8.3 6140	
ANGOLO DI ELEVAZIONE BRACCIO BOOM ELEVATION ANGLE	°	-10°/ +75°	
PORTATA OLIO CONSIGLIATA SUGGESTED OIL FLOW	lt/min U.S.gal	25 6.5	
ALTEZZA MAX. DALLA BASE MAX. LIFTING HEIGHT FROM CRANE BASE	m ft	7.53 24' 8"	9.90 29' 10"
PRESSIONE MAX. ESERCIZIO MAX. WORKING PRESSURE	bar psi	195 2830	
PESO GRU CRANE WEIGHT	kg lbs	840 1850	920 .2030

SPECIFICHE ARGANO/WINCH SPECIFICATIONS		
PORTATA MAX ARGANO TIRO DIRETTO (al 1° strato) WINCH SINGLE LINE CAPACITY (1 ST layer)	kg lbs	2835 6250
PORTATA MAX ARGANO TIRO DIRETTO (al 3° strato) WINCH SINGLE LINE CAPACITY (3rd layer)	kg lbs	2500 5500
VELOCITA DI SOLLEVAMENTO ARGANO PULL LINE SPEED (2 nd -3 rd Layer)	m/min ft/min	10 - 13 34 - 42
DIAMETRO FUNE ROPE DIAMETER	mm in	12 15/32"
LUNGHEZZA FUNE ROPE LENGHT	m ft	35 115'